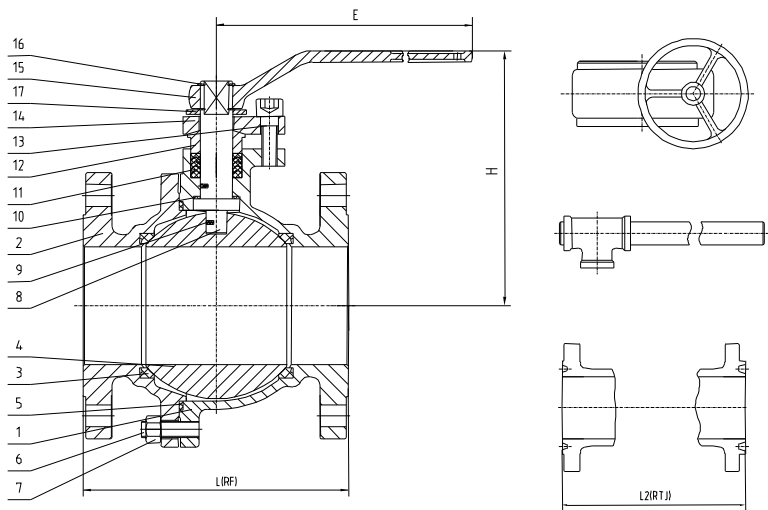


## Cast Steel Floating Ball valves



### Construction Features

Floating type, Fire safety, Anti-static device, Stem anti-blow-out device, soft seal, two pieces.

### Standards :

Basic Design: API 6D, API 608, BS 5351

Flange End: ASME B16.5

Face to Face: ASME B16.10, API 6D

Butt-welding Ends: ASME B16.25

Inspection & Testing: API 598.

### STANDARD MATERIAL SPECIFICATIONS

NO.	Name Parts	Material		
1	Body	A216 WCB	A352 LCB	A351 CF8/ CF8M
2	Bonnet	A216 WCB	A352 LCB	A351 CF8/ CF8M
3	Seat Ring	PTFE/RPTFE/Nilon		
4	Ball	A105+ENP	A182 F304	A182 F304/F316
5	Bonnet Gasket	Graphite+304/316, PTFE		
6	Bonnet Bolt	A193 B7	A320 L7	A193 B8/B8M
7	Bonnet Nut	A194 2H	A194 4	A194 8/8M
8	Stem	A105+ENP	A182 F304	A182 F304/F316
9	Spring & steel ball	SS	SS304	SS304/316
10	Thrust washer	PTFE		
11	Stem Packing	PTFE		
12	Gland	A276 410	A276 410	A276 304/316
13	Gland Bolt	A193 B7	A320 L7	A193 B8/B8M
14	Gland Flange	A216 WCB	A352 LCB	A351 CF8/ CF8M
15	Handle	CS		
16	Retainer	CS		
17	Stopper	CS+Zn/SS		

### DIMENSIONS AND WEIGHTS

Class	NPS	1 / 2	3 / 4	1	1-1/2	2	2-1/2	3	4	5	6	8	10
150	L(RF)	108	117	127	165	178	190	203	229	356	394	457	533
	H	78	85	85	120	132	146	164	202	252	285	347	389
	W	130	130	160	230	230	400	400	460	500	550	1000	1000
	Weight(KG)	1.78	2.	3.51	7.23	11.0	14	22	53	58	108	195	312
300	L(RF)	140	152	165	190	216	241	282	305	381	403	502	
	H	78	90	85	120	132	146	164	193	254	298	385	
	W	130	130	160	230	230	400	400	460	500	550	1000	
	Weight(KG)	2.29	3.6	5.1	10	14	23	30.6	50.5	93	116	234.	
600	L(RF))	165	190	216	241	292		356	432		559		
	L2(RTJ)	163	190	216	241	295		359	435		562		
	H	98	112	119	145	165		192	230		382		
	W	120	140	165	200	230		400	460		550		
	Weight(KG)	5	8	11	14	18		34	75		101		