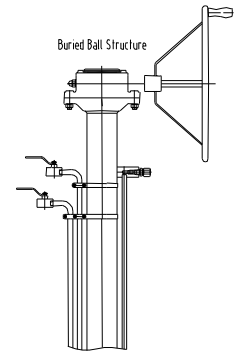
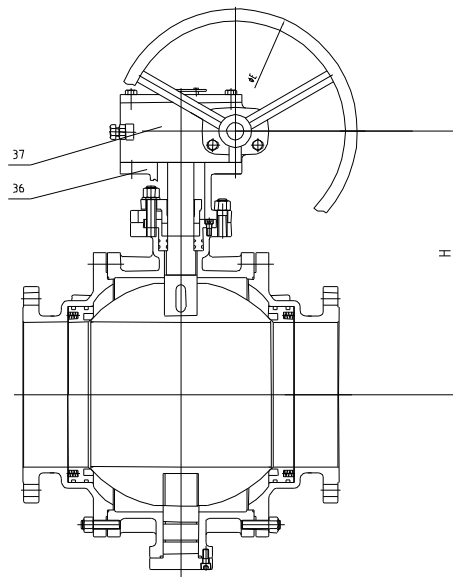
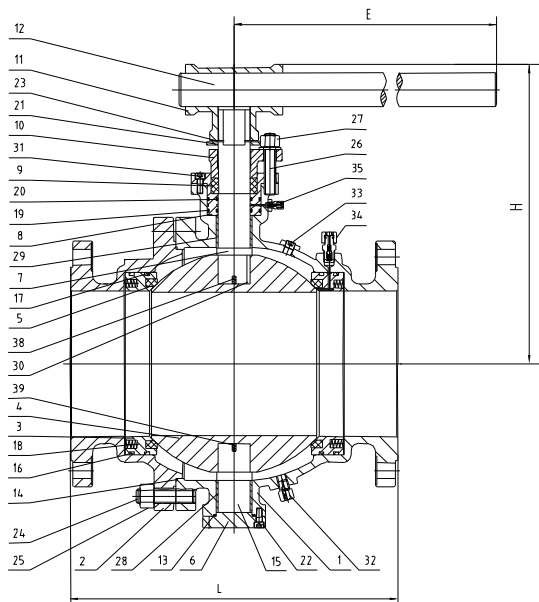


Cast Steel Trunnion Mounted Ball valves



Construction Features

Trunnion mounted type, Three or two pieces, Sealant injection in seat and stem area, (DBB) Double block and bleed, Floating seat, Fire safety, Anti-static device, Stem Anti-blow-out device, Soft seal.

Standards :

Basic Design: API 6D, API 608, BS 5351.
 Flange End: ASME B16.5, ASME B16.47.
 Face to Face: ASME B16.10, API 6D.
 Butt-welding Ends: ASME B16.25.
 Inspection & Testing: API 598, API 6D, ISO 5208.

STANDARD MATERIAL SPECIFICATIONS

NO.	Name Parts	Material		
1	Body	A216 WCB	A352 LCB	A351 CF8/ CF8M
2	Bonnet	A216 WCB	A352 LCB	A351 CF8/ CF8M
3	Seat	A105+ENP	A350 LF2+ENP	A182 F304/316
4	Ball	A105+ENP	A350 LF2+ENP	A182 F304/F316
5	Seat Insert	PTFE / RPTFE/ Nylon		
6	Bottom Cover	A216 WCB	A352 LCB	A351 CF8/ CF8M
7	Stem	A105+ENP	A350 LF2+ENP	A182 F304/F316
8	Packing Box	A105+ENP	A350 LF2+ENP	A182 F304/F316
9	Stem Packing	Graphite		
10	Gland	A276 410	A276 410	A276 304/316
11	Tie-in	CS		
12	Lever	CS		
13	Cover Gasket	PTFE or Graphite		
14	Bonnet Gasket	PTFE or Graphite		
15	Trunnion	A105+ENP	A350 LF2+ENP	A182 F304/F316
16	O-ring	Viton or NBR		
17	O-ring	Viton or NBR		
18	Seat Spring	Inconel X-750		
19	O-ring	Viton or NBR		
20	O-ring	Viton or NBR		

NO.	Name Parts	Material		
21	Stopper	CS+Zn/SS		
22	Cover Bolt	A193 B7	A320 L7	A193 B8/B8M
23	Retainer	CS		
24	Bonnet Bolt	A193 B7	A320 L7	A193 B8/B8M
25	Bonnet Nut	A194 2H	A194 4	A194 8/8M
26	Gland Bolt	A193 B7	A320 L7	A193 B8/B8M
27	Gland Nut	A194 2H	A194 4	A194 8/8M
28	Bearing	SS304+PTFE	SS304+PTFE	SS304/316+PTFE
29	Bearing	SS304+PTFE	SS304+PTFE	SS304/316+PTFE
30	Key	CS		
31	Bolt	A194 2H	A194 4	A194 8/8M
32	Drain Plug	CS	CS	SS304/316
33	Vent Plug	CS	CS	SS304/316
34	Injection Fitting	CS	CS	SS304/316
35	Injection Fitting	CS	CS	SS304/316
36	Yoke	A216 WCB	A216 WCB	A351 CF8/ CF8M
37	Worm Gear	Subassembly		
38	Anti-static spring	SS		
39	Anti-static spring	SS		

DIMENSIONS AND WEIGHTS

Class	NPS	2	3	4	6	8	10	12	14	16	18	20	22	24	28	30	32	34	36	
150	L	178	203	229	394	457	533	610	686	762	864	914	991	1067	1245	1295	1372	1473	1524	
	H	160	200	230	335	405	427	465	506	622	666	730	833	895	935	1010	1060	1077	1115	
	W	265	285	285	*300	*300	*300	*500	*600	*600	*600	*600	*600	*800	*800	*800	*800	*800	*800	*800
	Weight(KG)	21	32	52	164	345	440	577	859	1144	1440	1944	2352	2803	4045	6200	5490	6704	9600	
300	L	216	283	305	403	502	568	648	762	838	914	991	1092	1143	1346	1397	1524	1626	1727	
	H	160	200	230	345	415	427	465	519	638	683	748	854	917	958	1035	1087	1104	1143	
	W	265	400	750	*300	*300	*400	*500	*600	*600	*600	*600	*600	*800	*800	*800	*800	*800	*800	*800
	Weight(KG)	25	46	77	211	322	517	758	975	1350	1715	2090	2220	2890	4575	5590	6240	7370	8435	
600	L	292	356	432	559	660	787	838	889	991	1092	1194	1295	1397	1549	1651	1778	1930	2083	
	H	167	210	240	345	415	427	465	519	638	683	748	854	917	958	1035	1087	1104	1143	
	W	400	750	1000	*300	*300	*500	*600	*600	*600	*600	*600	*800	*800	*800	*800	*800	*800	*800	*800
	Weight(KG)	33	63.5	117	285	452	736	1000	1329	1730	2285	2814	3370	4920	6060	6690	7825	8460	10650	
900	L	368	381	457	610	737	838	965	1029	1130	1219	1321	1422	1549	1753	1880	2032	2159	2286	
	H	169	210	240	358	431	443	484	540	660	700	770	880	945	987	1066	1120	1137	1177	
	W	460	1000	1500	*300	*400	*500	*600	*600	*600	*600	*600	*800	*800	*800	*800	*800	*800	*800	*800
	Weight(KG)	65	92	154	392	613	820	1125	1610	2010	2810	3460	4410	5497	10202	11620	12102	17462	20154	
1500	L	368	470	546	705	832	991	1130	1257	1384	1537	1664	1816	2043						
	H	169	210	240	365	423	560	608	662	796	849	964	1025	1065						
	W	750	1500	*300	*400	*500	*600	*600	*600	*600	*600	*800	*800	*800						
	Weight(KG)	65	145	259	475	821	1826	2170	2250	2760	3646	4497	5731	7151						

Note: * Worm Gear Operation